



Braine Lalleud

design number: GP15-112
date: 15-04-2015
designer: FS
sales: TB



Part of the Global Attractions & SPI Global Play Group of companies



Play Unit Capacity: 112

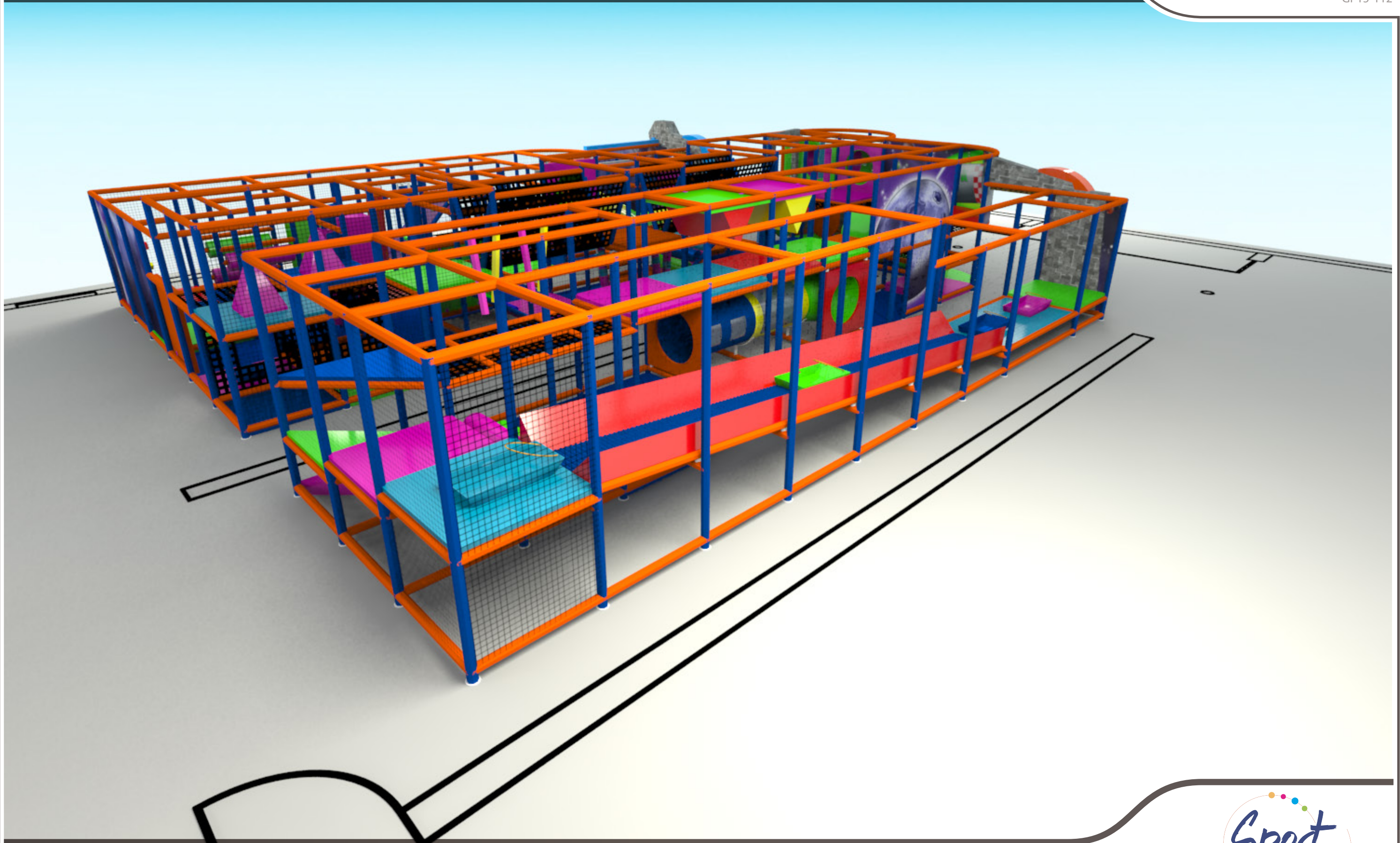
Structure Height: 2.6m

Footprint: L: 14.75m x W: 12.91m



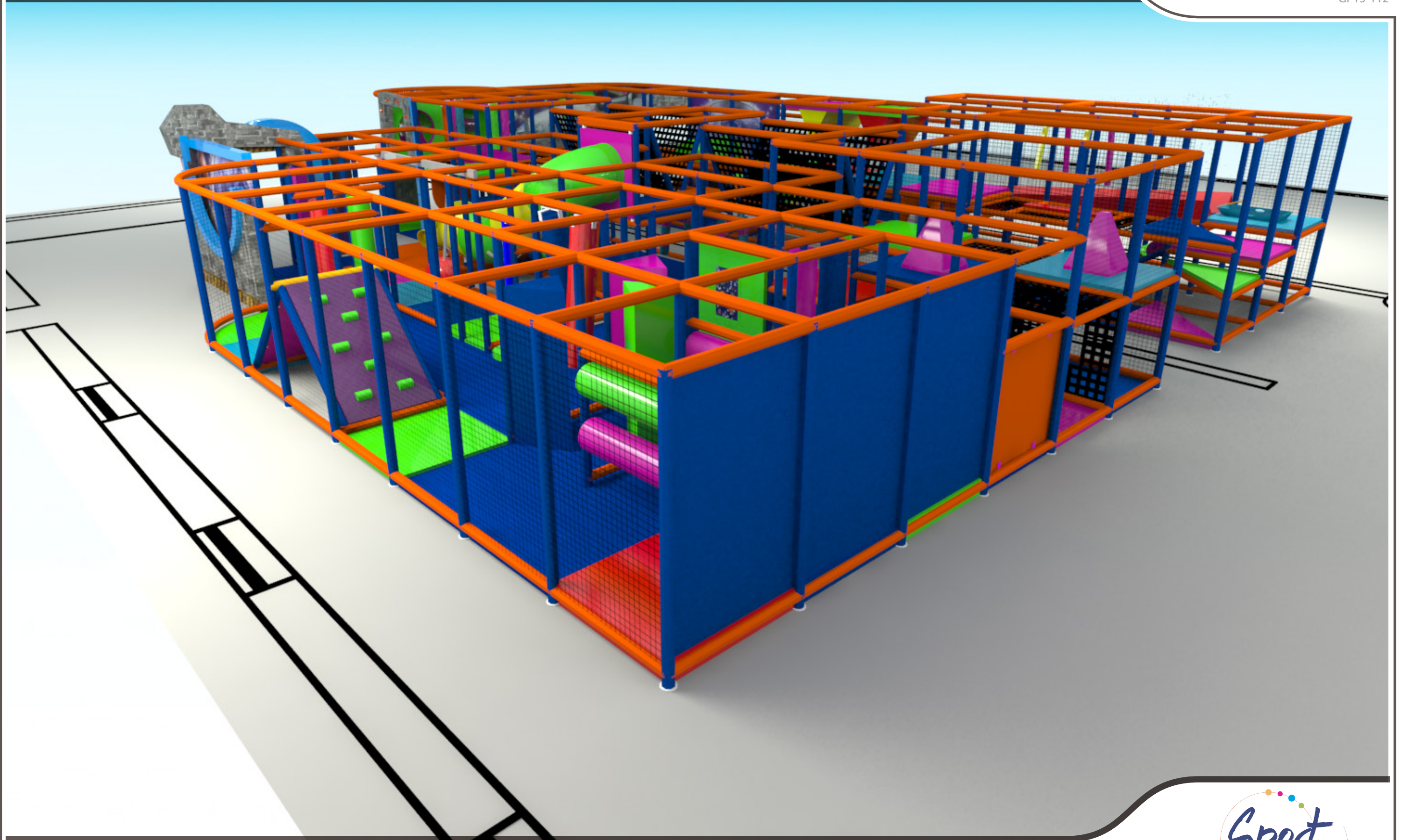
Project Information

Copyright © 2015 Sport Base. All rights reserved. May not be copied or reproduced in whole or in part. Note: Design for illustration purposes only. Not for use as an installation drawing. Actual colours and designs may vary from those shown.

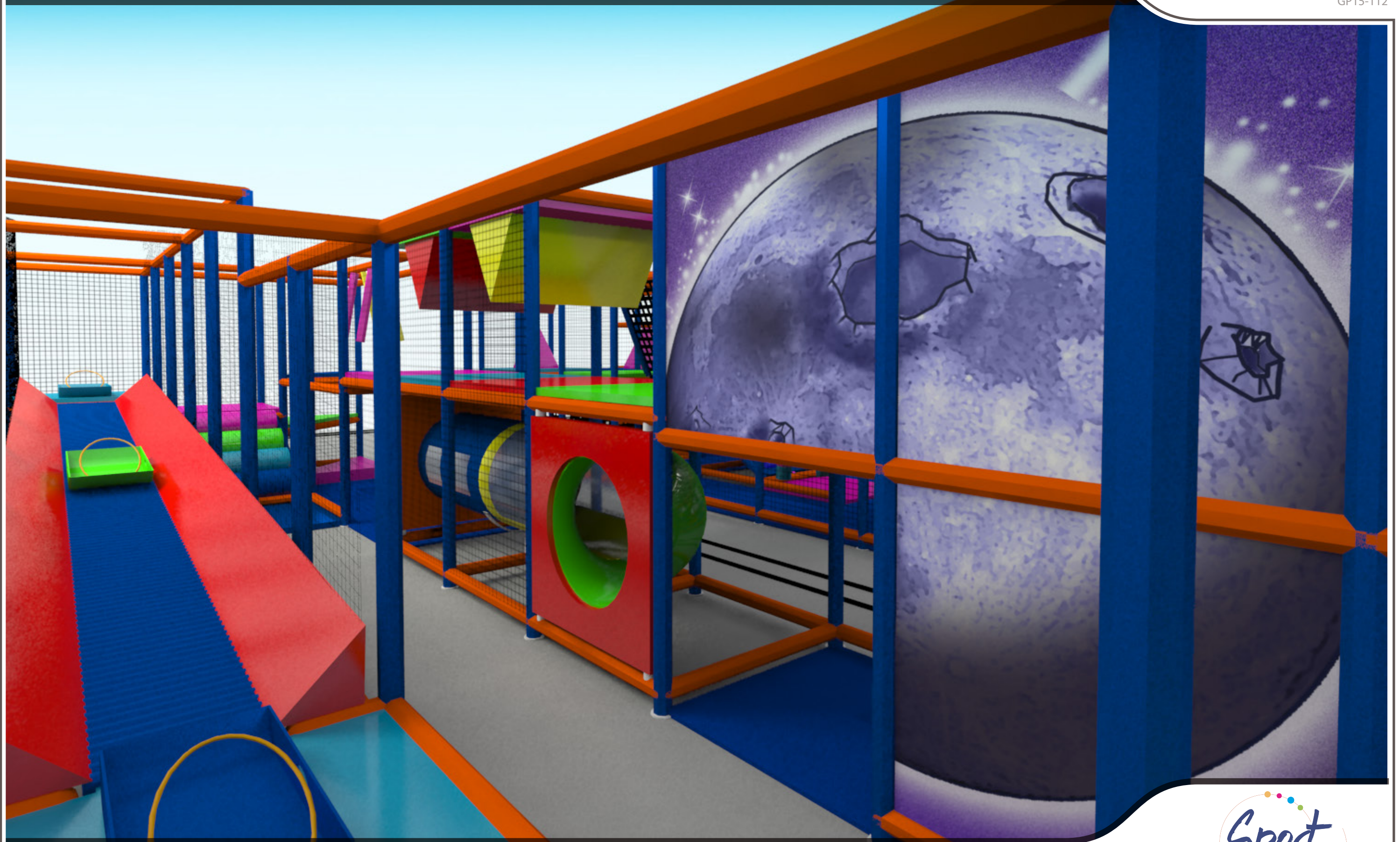


View 1





View 2



View 3



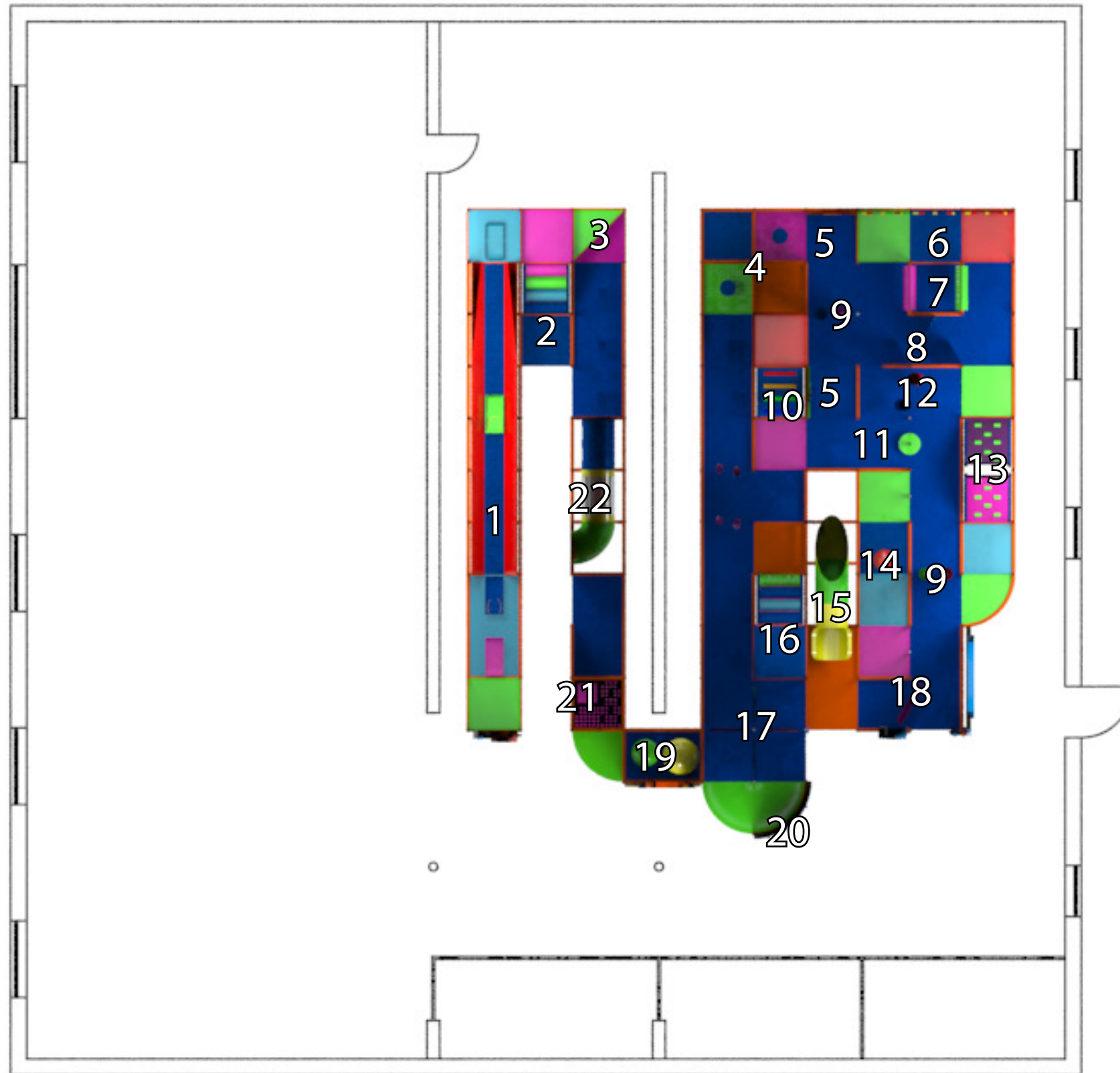
View 4



View 5

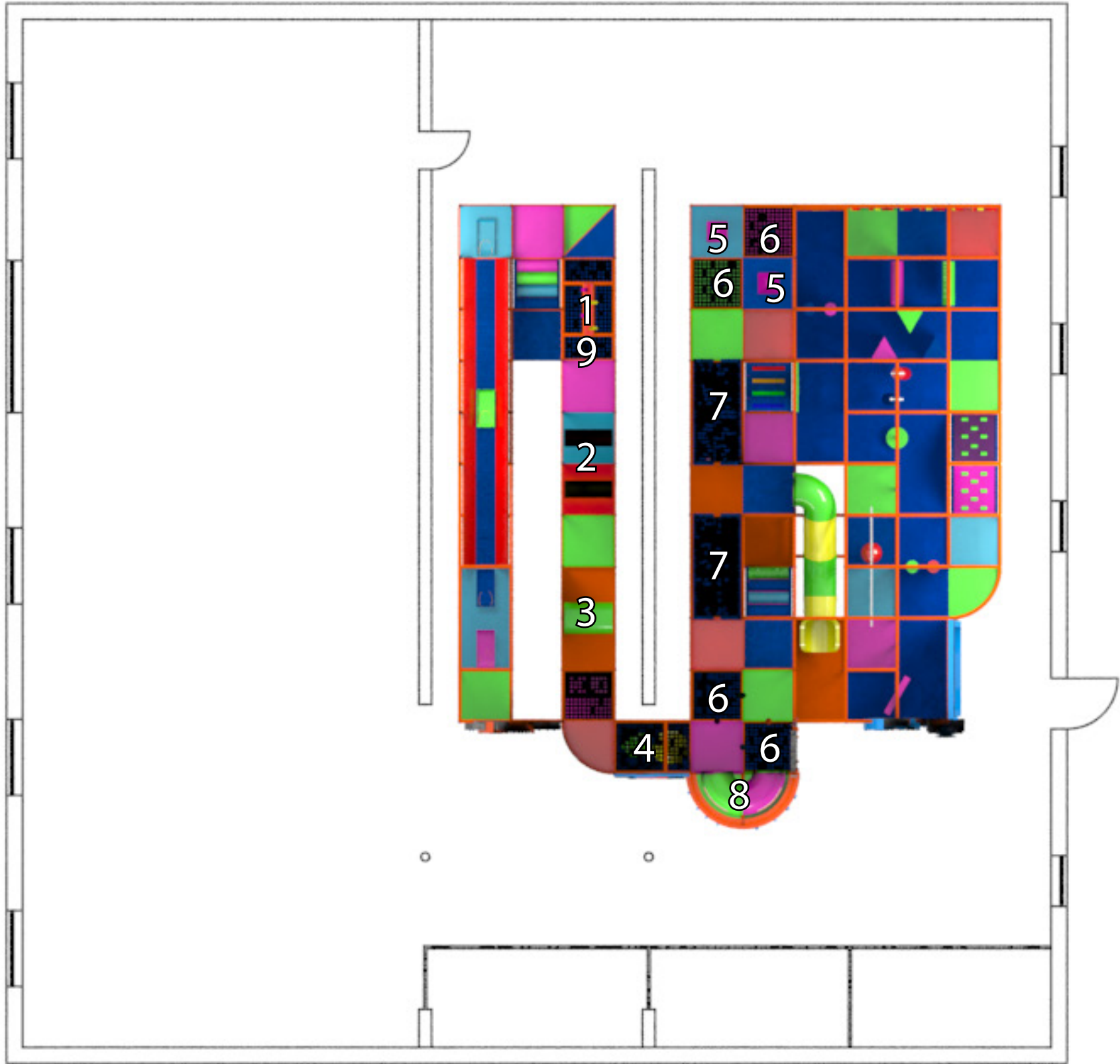
Contents

- 01 - Roller Slide
- 02 - Ramp to Roller Slide
- 03 - Tri Step
- 04 - Step Web Maze
- 05 - Play Panel
- 06 - Climbing Wall
- 07 - Horizontal Rolls
- 08 - Foam Wedge MAze
- 09 - Vertical Rolls
- 10 - Ramp 900mm
- 11 - Spinning Pole
- 12 - Punghing
- 13 - The Wall
- 14 - Trolley
- 15 - Slide Tube
- 16 - Ramp 900mm
- 17 - Spalt Pad Maze
- 18 - Spinning Door
- 19 - Ball Corridor
- 20 - 3D Theming
- 21 - Web Tower
- 22 - Crawl Tube

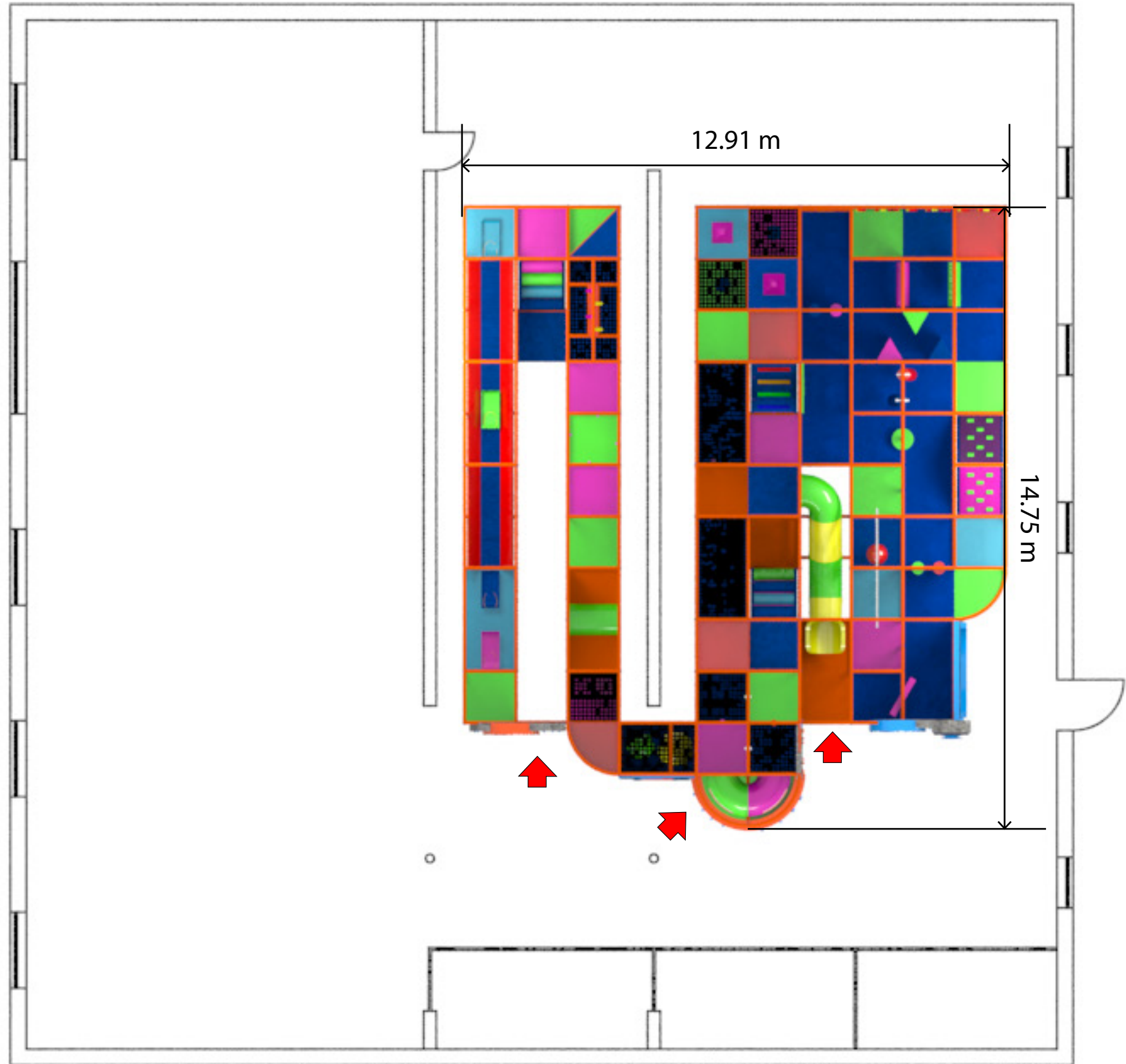


Contents

- 01 - Web Balance Beam
- 02 - Hanging Deck
- 03 - Mountain Deck
- 04 - Web Passage
- 05 - Pyramid Deck
- 06 - Web Deck
- 07 - Web Bridge
- 08 - Panoramic Tubes
- 09 - Snakes



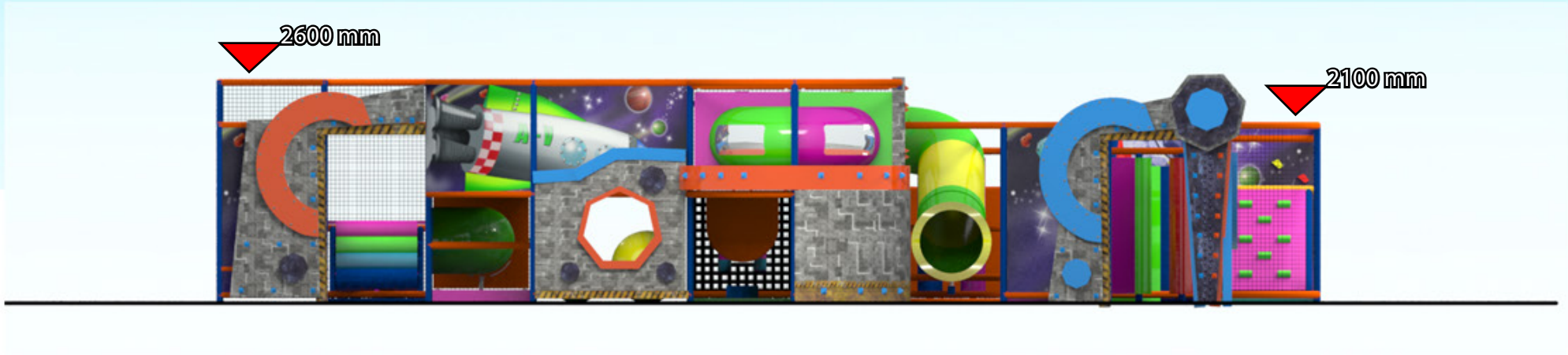
All dimensions must be site verified before construction.



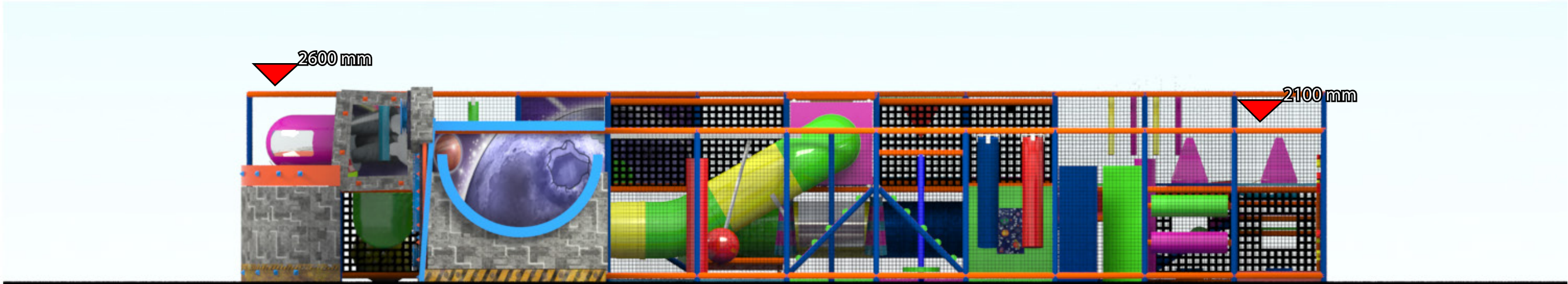
General Arrangement



All dimensions must be site verified before construction.



FRONTVIEW



RIGHTVIEW



Elevations